

CyberTel  
Group

---

# MONITORING SOFTWARE

PRODUCT DATA  
SHEET



**NEXALYTIC**

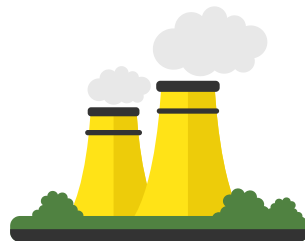
# NEXALYTIC

**NEXALYTIC** is a next-generation server-based software designed for the advanced monitoring and management of sites, power stations, electrical equipment, and any other device connected to networks that comply with the most widely adopted industrial standards.

**Tailor-made solution, Made in Switzerland, for every sector**



Aerospace



Energy



IT and  
Telecommunications



Chemical



Pharmaceutica

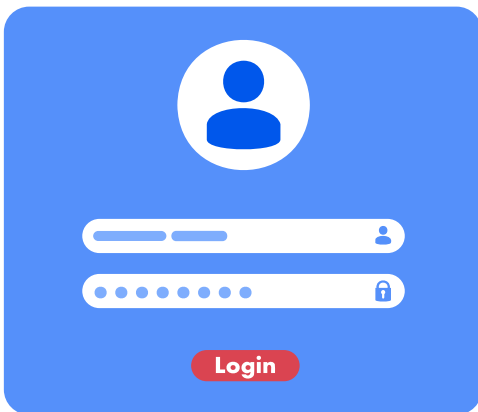


Banking

# NEXALYTIC

With an intuitive and highly functional graphical interface, **NEXALYTIC** enables precise and efficient supervision of resources distributed across complex network architectures, ensuring reliable and accurate control.

The platform (SaaS or On-Premises) is accessible directly from any web browser without requiring client software installation. A secure authentication system safeguards access, allowing users to operate with maximum security and ease.



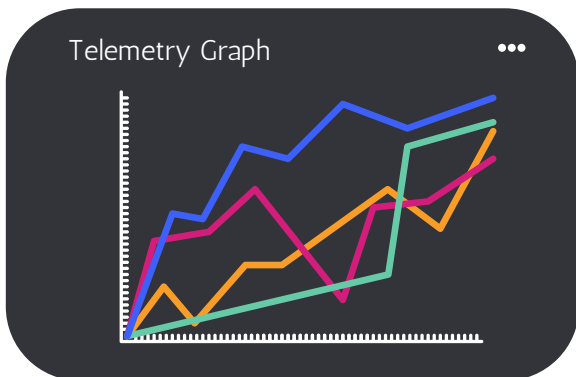
Once logged in, the user, based on assigned privileges, can access a range of interactive dashboards and advanced tools that simplify the management of the entire monitored network.

**NEXALYTIC** dashboards provide a comprehensive and detailed overview of the infrastructure status.

Upon logging in, users are presented with a graphical environment that manages data collected from monitored sites, offering multiple visualization options. The system also provides real-time alerts for the critical parameters of the electrical equipment under supervision.

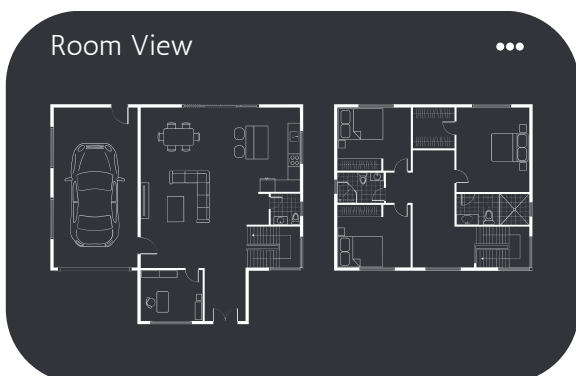
Thanks to a scalable architecture and integration with the most widely used protocols, **NEXALYTIC** is the ideal solution for companies that require complete **control**, **security**, and **automation** in their technological infrastructures.

### Reliability, precision, and simplicity in a single platform.



A **customized dashboard** can be configured to monitor specific systems, adapting real-time data visualization to meet operational needs.

A **geographic map dashboard** is available, providing a comprehensive overview of monitored hosts. The map displays the real-time status of all sites and devices under supervision, enabling immediate detection of anomalies or critical issues.



**Dedicated dashboards** are available for detailed management, including **site view**, **room view**, and **front rack view**, allowing precise control of monitored equipment.

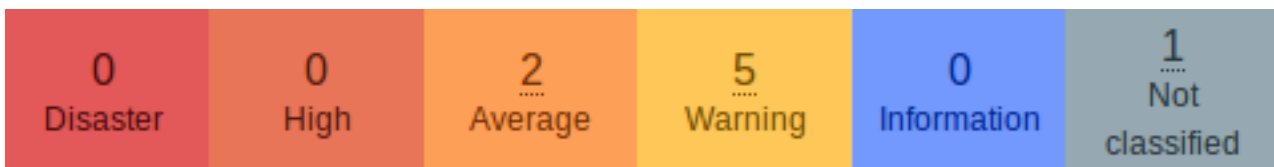
All data collected from monitored devices is stored in a **database**, enabling real-time processing and in-depth analysis.



The adopted databases are **widely recognized globally** and integrate the most **advanced standards** to ensure data security and protection.

**Dedicated sections** are available to view **alarm status** details and **intervene quickly** in any situation. Each event is clearly identified **to ensure timely and effective action**.

Thanks to **distinctive colors** and **prominent graphical effects**, the alert screens provide **immediate understanding**, while a **clear and intuitive design** ensures efficient management even in the most critical situations.



The **customizable alert system** provides an effective solution for monitoring **critical events**, ensuring **real-time notifications** wherever you are. With an **intuitive interface** and the ability to configure **tailored alerts**, users can select **notification channels** (SMS, Email, Telegram) and define **activation criteria** based on their *specific needs*.





The **Reports menu** provides a range of **predefined** and **customizable reports**, designed to offer a clear and comprehensive overview of essential parameters, such as **system information, triggers, and collected data.**

**Custom SLAs** ensure the **continuity** and **reliability** of monitored services. With an advanced availability calculation system, you can set **clear objectives, track real-time performance,** and receive **detailed reports** on service performance.



**NEXALYTIC: YOUR ALLY FOR INTELLIGENT  
AND UNCOMPROMISING MONITORING.**

**CYBERTEL GROUP**

# Key Elements

## USER FRIENDLY INTERFACE

A simple, customizable, and intuitive user interface for easy navigation.

## USER ACCOUNT POLICY

Advanced user privilege management and system access control.

## DATA ANALYSIS

Ability to accurately analyze all collected data.

## SECURITY

Data security and system server access control.

## SCALABILITY

Ability to integrate or remove predefined and custom features.

## ASSET MANAGEMENT

Navigation tools and resource browsing tools.

## MAP VIEW

Interactive map of all monitored sites.

## REAL TIME ALLARMS

Customized and efficient alert system (from emails to phone messages).

## KPI

Key performance indicators for various parameters.

## STORAGE DATABASE

Dedicated database for data storage, statistics, and analysis.

## EASY SETUP

Easily and intuitively configure advanced parameters.

N  
E  
X  
A  
L  
Y  
T  
I  
C

SUPPORTED TECHNOLOGIES	
<b>Operating System</b>	
Operating System	
Data Base	
<b>Supported Communication Protocols</b>	
Built - In	
Other supported protocols (Additional hardware required, refer to datasheet).	
<b>Miscellaneous</b>	
Third-party software integration	
Hardware Configuration Example*	
Deployment Size	Monitored Metrics
Core	1000
Advanced	10000
Pro	100000
Elite	1000000

\*Configuration may change based on project requirements.

CYBERTEL GROUP  
Via della Madonnetta,15  
6900 Lugano  
Switzerland  
[info@cybertelgroup.com](mailto:info@cybertelgroup.com)

